



# TEXEL MARKETING GROUP

INTERNATIONAL  
NEWSLETTER No. 55  
April 2006

LINKING FARMER PRODUCERS WITH END USERS



Caretaker, Billygoat Gruff pruning cottage roses at Endean's Waimiha Mill.



Tailing - best result ever. Pam and Paul Crump (RHS) have used Finn Texels since 1991. Surplus breeding stock is sold annually to Central Hawke's Bay farm. Okaramio, Havelock, 28 September 2005



Scene through a barb-wire loop; the stuff of fairy tales. Serene old sheds and timbers. Riwaka Valley, Nelson October



A whole community went in 1990, when Endean's mill closed. Stacks of timber, 'sad' mill houses and goats are all that remain after 60 years of frenetic activity. Waimiha, August 2005



Photographing. 'In the face photography' by Steven McNicholl, for an article about OSRS in the Hawke's Bay Today.

Paratu, October 2005



Farm names sometimes attract surprising responses; 'Pantie Downs'. Hyde, Central Otago, October 2005



A new fence was needed, so Walter built it. Every farm needs a 'Walter'. Deer made the ground uneven. Deer wreck fences.

Walter Cresswell, Tarata, October 2005

**Robin Hilson**, RD 1, Waipukurau, Hawke's Bay  
Phone 06 855 8335, Fax 06 855 8405, Mobile: 027 444 1806

**Robert Carter**, RD 3, Taumarunui, King Country  
Phone 07 896 7020, Fax 07 896 7030, Mobile: 027 223 5550

**Colin McDonald**, RD 1, Tokanui, Southland  
Phone 03 246 8475, Fax 03 246 8475, Mobile: 025 296 2750

**Chris Southgate**, PO Box 147, Dannevirke, Hawke's Bay  
Phone (Business) 06 374 9862, Fax (Business) 06 374 9872  
Mobile: 027 484 6576, Phone/Fax (A/H) 06 374 2740



Planning. Peter Kettle (Burnside manager), Colin McDonald (OSRS South), Robert Carter (OSRS West), Robin Hilson (OSRS Helmsman) Clare Callow (Animal Breeding Trust-SIL), Garry McLennan (OSRS Operations Manager).



Tea, coffee, biscuits, OSRS/TMG, newsletter. Now for a serious read. Balfour, Southland, October 2005



Waikaia Cemetery. A very private place amongst spectacular scenery. Gravestones tell of death by freezing and drowning. Destitute people trudged through here looking for work on the gold-fields of Central Otago or the bush clearing of Southland. A place worth visiting. Southland, October 2005



Hilson men at play. Robin drives, Alastair (Los Angeles) and Richard (Takapau), shoot. Tally 22 hares. No possums. Paratu, October 2005



Lamb rearing is 'in'. Farmers spend little time with 'easy-care' Finn Texel ewes. Time is available to rear surplus/spare lambs. This is a profitable practice.

Chris and Amie Gardner, Cambridge, 12 September 2005



Finn Texel Lambs. Spring. Dipton, Southland October 2005



Mountains which excluded sunsets from the Tarata homestead make a definite line for colour splashes when viewed from Paratu. Red sky at night; shepherd's delight. October 2005



Azaleas and Rhododendrons have shifted well from Tarata, but life will never be easy for them down from the hills. Spring. Paratu, October 2005



The bottom end. Fragile sand-dune pasture predominates along the coast. Stewart Island and Bluff Hill are just visible.

OSRS South, October 2005



Mt Pisa. Great craggy purple peaks. Spring terraces white with grape vines. Irrigated flats. Finn Merino ewes have been farmed for 10 years; now Finn/Texel/Merinos.

Cromwell, October 2005



Farmers are encouraged to select their two-tooth rams at any of three NZ outlets. Richard Loe (Oxford) selected Finn Texel rams to use over romney ewes.

OSRS, December 2005



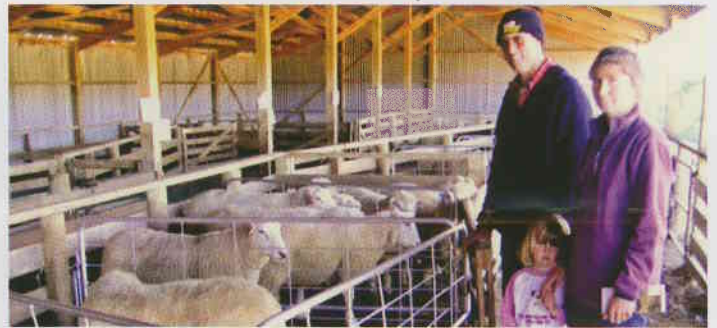
Dr Tom Watson (Genetic Technologies Ltd) preparing material for blood collection. DNA parentage recording is being used with the Finn flock to increase accuracy. GTL offered 'more' to OSRS programmes than did Ovita.

Paratu, November 2005



Long sweeping panoramic views of Foveaux Strait from the McDonald homestead. Constantly changing seascapes are fascinating. Tourist liners sail past like moving cities.

Slope Point, November 2005



The most southern 'Mainland' farmers, Bevan and Carol Haslett at Colin's Open Day.

27-28 November 2005



Lamb and calf day at Takapau School. A great day for parents, grand parents and pets - everyone is winner. Steve Wyn-Harris (who played cricket with Robin for years) was the announcer.

Takapau, November 2005



Otorohanga bound 1/4 Finn, 1/4 Texel, 1/2 Perendale rams. Alister Hogg has been using Finn Texels on his Waikato farms since 1990.

November 2005



Blood collection. A tiny prick is made in the ewe's ear, blood flows and is smudged onto a blotter which is sent to Melbourne where the DNA pattern is recorded.

Burnside, 20 January 2006



Open day; before the crowd. The line of the new covered yard compliments the artistic line of Kirikau Valley's oldest woolshed.  
OSRS West, October 2005



Signs by Susan Higginson (Waipukurau) on Robert Carter's truck.



Ian Jolly (Wairarapa) and Robin Hilson. Ian's Eketahuna farm uses Finn Texel and Texel Suffolk rams only.  
Open day, 7 November 2005



Discussing options. After viewing rams Eric and Naomi Forsyth decided to use Finn Texels over their Wanganui Romneys.



Sponsorship. OSRS has sponsored riding events, Horse of the Year competitions (Hastings), horse races, an art exhibition (Wellington), a motorcyclist (USA), shearing competitions (Tapawera).  
CHB, A&P Show, November 2005



Susanne Carter cuts the ribbon. Ram selection and stock work is now so much easier with a massive covered yard.  
OSRS West, October 2005



Open day. Visitors came from far and wide. Food was prepared by Austrian chefs. Sue Rowlands (Takapau) is talking with Karen O'Carroll (Harwarden).  
Burnside, OSRS, 7 November 2005



Relaxed viewing with plenty of time to discuss all things farming. Karen and Barry O'Connell with Texel Suffolk sale rams; some they bought.



John Cheyne (HB Fish & Game) surveying the site for a dam which will increase the OSRS wetlands. Streams are double fenced and planted in mostly indigenous flora. Many kilometres have been completed at Tarata.



Texel Suffolk ewes and lambs. 1200 ewes are mated annually. The flock was established in 1991. All lambs were weaned at 100 days and averaged 42.33kg live weight, a growth rate of 383 gms per day. Ram singles averaged 43.15kg and multiples 36.05 kg L.W.



Texel ewes and lambs on the road; about to be shorn and weaned. Tarata, January 2006



Nelson folk at play. Rather wild looking bowmen shoot at 'americanised' targets (a racoon and bighorn ram.) Success in the wild involves stealth, exercise and hard walking.

Kikiwa, 29 January 2006



Nelson folk at play. Poisons for mind and body, so necessary, if you wish to 'enjoy' yourself. Tahunanui Beach January 2006



Nelson folk at play. Robin Hilson and Les Cook (cousin) about to tempt fate from the tops of Hira Forest. All crashes 'felt' spectacular. Tim Tucker (Robin's son-in-law) was the driving force behind the creation of these scary trails.

Nelson, February 2006



Tarata. OSRS's dark hills reach 800m asl. Some of the shelter planting and lush pastures of Block 4 fill the foreground. Overcast weather is a feature of climate change. Tarata, January 2006



New tracks and fence lines on Maire Hill. Tarata, February 2006



The Tadmor church has a cemetery but does it have a congregation? Nelson, February 2006



An unusual outline in a forest, the North Island.

Reay's Saddle, Hiwipango, Nelson



Nelson has big mountains, big rivers and even big Moa bones but his chook is very **big**. Tadmor, February 2006



Haast. 9.30pm. River plains and Landsborough Mountains. So very inspiring. January 2006



Sherwood Downs. Normally dry. Easterlies have kept the country green. Another record lambing. Excellent Finn Texel lambs. Stephen Crone, Fairlie, January 28, 2006



Pivots everywhere. Water allocation has become a major South Island issue (as predicted in 2000). Kurow, October 2005



Dorper ewe with her October twins and her April twins. Open day 2005.



Shedding Wool. April born lambs (7/8 Dorper) at various stages of shedding. Only occasionally are pieces of dorper wool found in paddocks or yards. Burnside, October 2005



Road rage brewing. Vintage car enthusiasts really delay traffic enormously. Drivers seem unwilling to pull over.

Lake Wakatipu, January 2005



'Lest we Forget'. Two starling **forgot** how to get out of Ivan's old cast. Starlings are very poohy birds; very messy birds, who never clean up their messes.

OSRS, December 2005



Recycling at its best. It took ten years to remodel the Tussock Creek Presbyterian Church into a retirement home for Mervyn and Elisabeth Pagan.

Southland, November 2005



Christmas lambs from Dorper ewes, which were mated in August (photo, newsletter 54); 134% lambing. OSRS, December 2005



Sociable Dorpers. They graze together, they move together, they rest together. Paratu. February 2006

Up on Waipukurau plans

One stop Ram Shop is set to make financial gains

With twice yearly little dorper lambs

To help upset the Christmas plans

White one, black one and colours in-between

From the road it makes them easy to be seen

It's all about making a crust

So that farmers don't end up in the dust.

The minister of finance will be quietly smirking

about all those farmers out there working

He doesn't care if all the lambs come in the festive season

To help government coffers beyond all reason

The companies have to play their part

And pay well these farmers, for being so smart

Who produce two lots of lambs a year

Especially ones that come with Christmas Cheer.

*The Hiwipango Poet (Nelson)*

### MEAT COMPANIES ARE SKIMMING

Sheepmeat demands have never been higher. The exchange rate has been much higher.

***Farmers are price takers; not price makers.***

Pam Anderson (of 'surgically enhanced' breasts fame) has complained to the KFC, NZ about the practice of rearing poultry in sheds and the use of 'genetic enhancement to increase the size of chook breasts.

***Pam, don't throw stones.***

N.B. Better nutrition has forced bra producers in China to offer bigger cup sizes. "You never expect those thin women to have nice figures if they are not plastic." (Shanghai Daily)

## PREDICTIONS

APRIL 2006

- Another warm winter.
- OSH will ban pavement cafes (clients are exposed to toxic fumes).
- Sheepmeat in short supply forever.
- Police issuing motorists tickets with flybuys.
- Fewer ram hoggets being used for tupping.



Hello,

Burnside, January 2006

## QUOTES

- "I'm so sad about Ra. I always looked for him in the newsletters to see what antics he's been up to now. I'll miss him" Technician, Central HB Print, Waipukurau
- "I'll miss not seeing him (Ra) 'putting up' with the indignity of yet another photo. He looked so tolerant and long-suffering. Actually quite understanding" Taihape
- "I'll miss Ra, he always used to lean on my leg when I visited". Taumarunui
- "What I like about your farm is all those lovely shelter plantings. Miles of shelter for stock and pasture so considerate. If I was a sheep I would appreciate it - just as anybody who has been a mother would" Kirikau
- "We would like one Texel-Suffolk ram. They last a long time. We have had to cull one that was born in 1997 as his feet have gone. We got him from you the first time. He is still fat and willing. The ones born in 1998 are still going strong, teeth are worn but will still do another year. Last years ram hoggets that you have sent have grown well". (OSRS had 'sold out' of TS two-tooth rams). Otangiwai
- "I hear you've got dairy country?" An accusation by a Timaru farmer. "It was dairy farmers who came and called our sheep country dairy country. I was at Takapau first." Robin replied.
- "It's great to read about Grant sounding off about M&WNZ's achievements - but we're seeing none of it" David James, Owen River, Nelson
- "Medium wools for carpets are still selling OK. Merino NZ selling in Australia really 'Stuffed up' - real disaster. I have no faith in the PGG/Wrightson merger to sell wool and make "decent money for farmers". Don Maginness, retired wool buyer. Christchurch, February 2006
- "The wild bugger arrived in Palmerston today, vaulted off the truck deck, and made for a mob of ewes and lambs to check them out. Took ½ hours cunning to round him up, hobble them chuck him on the deck for the trip home. I recon your then shepherds have been teaching them to jump!" Central Otago
- "Just rang to let you know I received those sheep today. Thank you very much. They're out in the paddock, just having a graze and chewing their cud looking as happy as can be. I'm thrilled with them and they're all looking good." Putaruru  
***OSRS takes sheep selection very seriously***
- "I know a farmer (who doesn't buy your rams) but gets the newsletters from another farmer and really enjoys them and comments every time." Wairarapa
- Comment after using ¼ Finn ¼ Texel ½ Perendale rams over Rom/E F ewes. "I'm really rapped with the lambs on the ground eh! Things are very positive. The rams look terrific" Makaretu, Gisborne
- "I really look forward to the newsletters." Farmer's wife, Owaka

## ARE YOU PLANNING TO LAMB HOGGETS THIS YEAR?

In my experience, the most common reason giving for mating hoggets, is the "extra" income generated by the sale of what many call "bonus" lambs. Is that good enough reason on its own? With increasing use of Finn and East Friesian genetics, hogget lambing is forever increasing and some interesting studies have shown up differences in these genetics versus more traditional breeds. But before you put the ram out, give some consideration to the following thoughts...

- ☐ What is the extra income generated by the bonus lambs
  - ☐ Lots
  - ☐ Not much
- ☐ How do ewe hoggets compare with unmated hoggets? Losses in non pregnant ewes will be virtually zero from mid-winter as a hogget until tupping as a two tooth. That will not apply to lambing hoggets - death rates of up to 10% are not uncommon and in some cases closer to 20%
  - ☐ Too high really
  - ☐ I'm comfortable
- ☐ Do you claim "genetic gain" by getting improved genetics faster by mating hoggets if 4-10% of those hoggets die, with their lambs too, how many steps forward have you taken while taking a whole lot backwards?
  - ☐ No, use terminal sire
  - ☐ Oops!
- ☐ Do those lambing hoggets still last to five year old and, if you think they do, how many of the original crop are represented in the CFA mob?
  - ☐ Don't know
  - ☐ Don't know
- ☐ What does that extra feeding of ewe hoggets in autumn really cost? A lot of emphasis goes on getting weight onto hoggets pre-mating and (especially) in summers like the last two, any spare green grass must be better fed to older ewes who know how to count and should produce 1.4 live lambs each
  - ☐ Lots of grain every autumn
  - ☐ Underfeeding MA and 2T the ewes
- ☐ Do you miss a mob of sheep to "push around" in late winter or early spring? There is no longer a mob of sacrificial lambs available to push into a rough corner to create space for lambing ewes while awaiting surplus.
  - ☐ No, I find space
  - ☐ Something suffers

The list goes on and on but lastly and most importantly, lambing hoggets must contribute to increased drench resistance issues. By late winter dry hoggets will be developing their own natural resistance as well as maintaining a refugia population of worms on the property.

By comparison, lambing hoggets are always drenched (and often with injections or capsules) and always under stress (being pregnant is a stress, lactation is a big stress).

- ☐ No matter how you approach it every single drench used must promote some degree of drench resistance in your sheep worm population. Using large quantities of drench on immature breeding ewes to ensure the survival and productivity of the ewe will not be sustainable.
  - ☐ I'm comfortable with drench resistance
  - ☐ No, I'm worried
- ☐ Personally, I struggle with the idea of lambing hoggets because there are so many negatives. However, the bottom line is what matters in most modern businesses and far be it for someone with my lack of financial know-how to suggest otherwise.

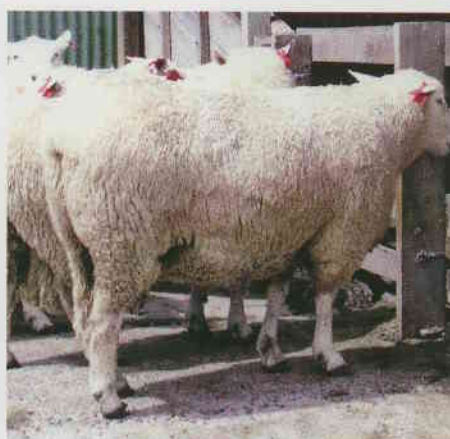
However the true cost of lambing hoggets is much higher than we care to admit.

(P.S if you want a new editor after digesting all that, please let me know with your 'reply' button)

*Reprinted with permission of Veterinary Services (HB) Ltd*



14 month, 1/4 Finn 1/4 Texel 1/2 Romney sale rams.



14 month, 1/4 Finn 1/4 Texel 1/2 Perendale sale rams.



A boot full of dust. Seals do not keep out dust gathered from 14311 kms driven on roads and farms in the South Island this season.