



One Stop Ram Shop

INTERNATIONAL
NEWSLETTER No. 72
August 2008

Open Days. Hawke's Bay. **Tues 4th November**
10 am to 3 pm.

Venue OSRS, 3952 SH2, Takapau.

Southland. Friday 7th November
(possibly).

Venue. OSRS South, 368 Otara-Haldane Highway.

With an increase in people acting on behalf of OSRS throughout NZ it will be easier for more personal service.

Farm visits are important and take place throughout the year. If there is an urgent need for a visit please phone, fax or email and one of us will be with you soon.



Tupping time again. Enthusiastic dorper ram with adoring girlfriends. OSRS. 20 March 2008.

Already there have been enquiries for rams in the 2008/09 season, some of which have been old clients returning after a few seasons absence, others are new. Could you please return the Freepost Order Form with your requirements asap, it really does help OSRS organization.



OSRS Helmsman, steering 'Prime Time' in Frederick Sound. 12.5kms per 14 litres of fuel each hour. Alaska, May 2008.



Reading OSRS newsletter 70 on an iceberg. No easy place to relax. Icebergs move steadily. Holkam Arm, Alaska.



Deserts are full of strange sights. Two pairs of perfect shoes have been abandoned. Baja.

Blair Gallagher does not breed rams for One Stop Ram Shop, but he is providing a shop window from which some rams, especially Texel Suffolks, will be sold.

Robin likewise is not breeding Perendale rams but will have a quantity of Blair's quality, performance recorded rams available for sale throughout the coming season.

Our businesses are different, but our desire to put money in farmer's pockets is the reason behind this move.

PREDICTIONS

- Biofuels or food? Food will win.
- Sheepmeat prices will improve, substantially.
- National will win the 2008 election.
- Farmers will vote for the PGW – SFF partnership.
- With PGW procuring stock SFF may stop losing clients.
- Stock prices high; stock for processing, minimal.
- More 'MIAG's' i.e. farmers getting involved with their industry.

5 LINERS.

- Fire demolished the Waipukurau cattle rostrum; the venue for many hilarious debates. Jim Hopkins wrote "it was our Globe Theatre"

*For OSRS, whose name will not be used again in a Hopkin's bawdy outburst, there is relief. Often he had the audience chanting 'One Stop Ram Shop' over and over again. **Hopkins was not on our payroll.***

- Retiring, Land Management head at the HB Regional Council Garth Eyles, had nothing but praise for farmer's environmental stewardship. HB Today, Aug.

Garth achieved so much with a team of knowledgeable, experienced, wise, conservators. Landowners are really grateful to Garth.

- 'Top Ups' make a mockery of 'final Waitangi Treaty settlements'.

Early settlement Iwi were allowed to ask for more money if the total paid out exceeded 1 billion in 1994 terms. Ngai Tahu and Tainui received extra millions although they have been able to grow their 'final settlement' money since 1994.

Other people's money (OPM).

- Unemployed Georgina Beyer is off to Aussie, bitter that parliament did not appoint her to a quango as a sinecure. 'She has so much to offer'! Dom, 15 Aug.

Appointment to quangos should be on merit not because of political affiliation or as a 'golden handshake'.

- What value did NZ taxpayers get from the junket trip to Eastern Europe by retiring MP's in May?

Their official report is to be tabled in Parliament. When?

Rather like the M&W NZ trips to Europe. No reports are written for farmers, who pay for the trips.

- NZ 2007, used 3.3 billion litres of petrol and 2.9 billion litres of diesel. NZ could be self sustaining in fuel by 2050, from managed forests

Will NZ pay for unproven technology to make this happen? NZ Geographic.

- Olympic competition is really all about Gold. Our team did well. To win one gold is great; three, fabulous.

On a population basis NZ was the fourth best.

- New Zealand has 4.2 million humans and 40 million sheep. For each person there are 9.26 sheep, .89 dairy cows and 1 beef beast.

NZ ewe flock, 23.6 million, is the lowest since 1952.

Australia has 80 mill sheep; China has 240 mill.

- Sumptuous advertisements by Cathay Pacific for their new 'Dreamliner' aircraft highlights good food, good wine, good service. Lucky dinners are being fed lamb chops. *Just the best.* Economist 17 May 2008
- Windpower NZ. 241 turbines produce 322 megawatts.

2200 megawatts are planned.

Could not one turbine be positioned by the Beehive where there is lots of hot air and wind?

- Another biosecurity lapse. Argentine and Darwin ants infest 748 sites, in Nelson; up from 500 sites last year.

*Global trade is the trade of goods and exotic livestock **whether wanted or not.***

- 1080. 57 plant species produce this toxin to repel browsing animals. In West Australia 1080 toxin leaches steadily into water supplies from many of these plants but nobody is harmed. A drink of tea involves taking in some toxin produced by the tea plant.

Almost all species killed by the poison in NZ have been introduced. This poison has been a saviour of NZ biodiversity by killing possums.

- Ocean Conservancy International cleanup (Sept 2007) counted litter on 53000 kms of beaches in 76 countries. Australia had 1.8kg/km; NZ, 21kg; US, 177kg; UK, 245kg.

- EU: Common Agricultural Policy (CAP) is backed by European Agriculture Ministers who want food produced in Europe, although wildly expensive, and to cut food imports. Rising food prices are improving farm returns.

- British bin a third of all food bought, Americans only slightly less. Economist, Aug 2008.

- Since 1999 Scottish sheep numbers have dropped 23% to 7.5 million. Fewer farmers, fewer shepherds, loss of biodiversity as bracken returns.

- 74% of the sheep exported from UK go to France, i.e. 20% of all lambs born in the UK. Lamb consumption is falling in France, a situation UK, French and Irish farmers are trying to reverse by combined promotion. Aug, UK Farmer's Weekly

- Save Our Sprays (SOS) campaign. EU is imposing bans on sprays with hazardous components. Chemicals are to be assessed individually and substitutes promoted where possible. So the SOS campaign was started by irate farmers. Without any impact assessments being made, the commission is pressing on. At a time of worry about food security for, their actions are stupid.

An impact assessment would be made if 80% of human medicines were to be removed overnight.

- US Farm Bill plans US \$307 billion in subsidies over five years. Many payments are linked to present record commodity prices. Lobbyists scared Congress by highlighting the political cost of food shortages.

'Congress at it's worst'. Economist, May 2008.

- US. 1969 17% of farm operators were 65 years old or older. By 2004 it was 27%.

- Hedge fund managers can earn lots of money. John Paulson earnt US \$ 3.7 billion (yes) last year. Soros got US \$2.9 billion.

To make Hedge Fund money, some people have to lose. *Gambling can pay well.*

- **US Losers.** Foreclosures in Las Vegas have led to swimming pools becoming the world's unlikeliest swampland as mosquitoes moved in. 200 Americans die annually from mosquito transmitted diseases. This serious problem is expanding fast.
- USA. Government wishes lamb meat to be provided in school lunches. **There isn't any available.**
- Server Farms. Huge data centres filled with powerful web-linked computers are going rural. They are being built where power is cheapest.

To cool the largest centres the energy required equates to that used by aluminium smelters.
Utilise this heat!

- If Australians farmed 175m kangaroos instead of the 7m cattle and 36m sheep which produce 11% of Australia's emissions, the same volume of meat would be produced and the gas volume would be 3% less. Reuters

Very little wool would be produced too.

Lehman Brothers Demise.

It was a report from this bank which pointed out the likely chaos, world-wide, year 2100 unless greenhouse emissions were drastically reduced. Governments worldwide accepted the 'evidence.' Al Gore's carbon trading scam. now vogue, is part of the Bank's business.

Dominion-Post 20th September.

How can such an organisation be believed? Predicting doom in 2100 but not it's own demise in 2008. Big, greedy business is scary.

*Yes, the world is in a warm cycle. There are too many polluting humans. Penalise polluters in their own countries. **The Emissions Trading Scheme (ETS) is a scam.***

to be continued

China News

Scott Champion (M&WZN, CEO) reported about prospects for NZ lamb in China. The Press.

The Texel Marketing Group (TMG) had major discussions in Australia with senior Chinese officials recently. Prospects are outstanding. There was one request for the supply of 6 million sheep carcasses annually for one city alone. Discussion mainly centred upon reshaping the huge Chinese sheep industry.

TMG declined all overtures as it was impossible to establish a legal structure which delegated responsibility and recognised genetic sovereignty. The Chinese wanted 'trust'; no legal agreements.

Perhaps TMG is wiser than Fonterra.



Ralph's supermarket LAX, California. Rib chops \$52.74. /kg. Sheraton Gateway, chef said lamb was a special on their menu whenever he could get it. Lamb was not available all year.

Los Angeles.

JUST MAYBE THERE IS CHANGE AFOOT?

For decades PPCS (now SFF) has 'blamed' farmers for supplying the wrong product and not growing what the market wants e.g. Finegard Open Day 7 years ago. Cooper now continues as Barnett's successor along the same lines.

Farmers rarely meet consumers overseas. Few have exported meat (TMG has) and learned of the pitfalls.

SFF has exported for decades. If they sent the wrong product, why are they still exporting? If farmers were producing the wrong product all SFF needed to do was to reward those with 'correct' sheepmeat, the others would change.

Farmers have always sought signals upon which to base breeding policies. Reward them and the 'correct' meat will be produced. Farmers do not know what SFF's customers want, as their knowledge and financial reward ceases at the point of sale to the meat processor.

AFFCO in 1982-84 wanted WX lambs, at good money; farmers provided them. Richmond wanted alpha and betta lambs; farmers soon produced them.

*SFF has given no long-term signals and is **wrong** to blame farmers for its **own faults**.*

Exception, Aug 29, SFF notice. Ram lambs will be discounted after 31 March.

"Pasture to Plate" systems have been around for decades, Robin Hilson presented a paper at Armidale University in 1987, on this topic.

Lean Meats and Progressive Meats have made these systems work by gentle coercion, targets and rewards. Both companies have very loyal suppliers.

So what's new? SFF, just maybe, learning to copy systems already established by small, efficient, friendly processors.

That's what's new.

*Prediction; SFF **will** succeed if it gets alongside farmers rather than being bossy.*

PGW have joined SFF, since this was written.

57°N ALASKA MAY

Huge, beautiful, with masses of natural resources, fascinating wildlife and few people Alaska is a tough place.

For two short weeks Alastair (Hilson) and Robin sailed in John Little's boat, Prime Time. No one tired of the colossal landscapes which unfurled at every corner, every new day. Hardly an hour was wet. Sea fog enveloped the boat only for one morning. Prime Time ploughed stoically through the mysterious fiords, sounds and straits of this northern state of USA for 700 fascinating kilometres.

Alaskans are hard-working and 'open' people. Republican, Vice President nominee, Sarah Palin is a 'typical' Alaskan.

Retired couples, attracted to the small towns and low taxes, buy a fishing permit (US \$35000) and go fishing together. Meanwhile many commercial fishermen cannot afford fuel for their boats.

Sitka, once the site of the most eastern Russian settlement, has a thriving cultural element. An annual concert spread over two months attracts world class musicians who 'play their hearts out' in the most incredible auditorium with a back-drop of high snowy mountains, conifer forests, sleek tourist liners, bossy ravens and elegant bald eagles.

Forestry has collapsed because of conservation pressure. Tourism offers jobs. 800,000 visitors arrive during the short summer, mostly in liners. Luxurious ships are everywhere. At Sitka (population 5000) and Juneau (8000) they disgorge masses of bored, overweight passengers who slowly stroll the pavements, buy a badge, photograph one-another at the memorial then settle down in the eateries, only to emerge when its time to go back on board to more food and drink. They see fiords, glaciers, icebergs and towering alps.

Did they get within 20 metres of a grizzly bear and her cubs, clamber on an iceberg, or catch a salmon as we did?

Towns are clean and colourful; each reflecting its history by its architecture and in the many museums. Alaskans are proud of their Indian, Russian, American and 'frontier' history. They enjoy their mixed origins with equal candour. To Alaskans only Alaska matters.

Wildlife is everywhere. Sea lions swim amongst parked fishing boats, black-tailed deer wander along main streets. Hunting wildlife is a local sport and a major tourist business. Quotas are strictly enforced. All edible meat is expected to be eaten even if cartage is difficult.

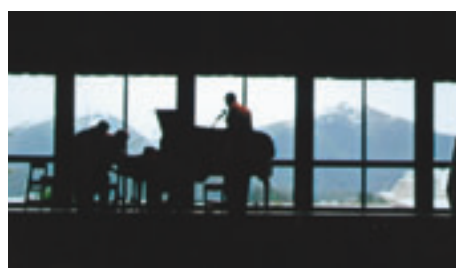
Sharing tracks with bears is a reality. Care and constant vigilance is a must. Bears are thriving as longer growing seasons produce more food. Strawberries, blackberries, cranberries, gooseberries, teaberries, blueberries, bilberries etc are everywhere and eaten by all animals. Brown bears (Grizzlies) who used to produce two cubs annually for only one to survive now produce up to four with three surviving.

Whales breach near boats, spray their 'fishy' breaths around then disappear for ages. Whales are difficult to photograph. Whales do their 'whale things' really well. How marvellous they are in such pristine surrounds.

Salmon hatcheries, funded by fishing levies are impressive facilities. Doubts about their value are arising; scientists consider hatcheries interfere with natural selection in a huge way. When salmon are being milked, at the hatchery visited, up to sixteen grizzlies plunder the fish ladders making life scary for staff who cannot shoo them away.

Spawning rivers are protected everywhere. It will be no surprise if soon hatcheries only gather ova for human consumption.

Alaska, as part of the 'Pacific rim of fire' is seismically active. Volcanoes do their stuff regularly. Earthquakes are frequent and big. Disasters caused by tectonic activity are few only because the population of 670,000 is scattered over such a large area.



Professional musicians from all over the world give concerts at this venue, with tourist boats and snow covered alps forming the backdrop. Sitka.



Juneau, capital city with 8000 people. Frequently isolated for weeks by fog. Alaska, May 2008.



'Our' Wwoofer, John Little. Wharves, houses, mountains; beautiful Alaska (and John). Petersburg, May, 2008.



Moored fishing boats. Reflections of boats and soaring Bald Eagles. Petersburg, May, 2008.



Petersburg housing reflects its Norwegian heritage.



Black-Tailed deer quite at home in town even using the only pedestrian crossing.

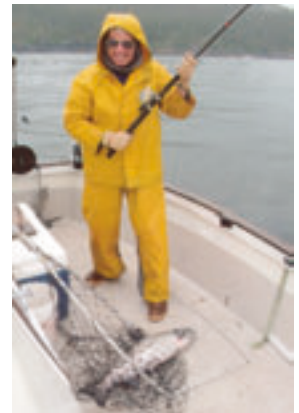


Tourist liners emerge from every corner.
Frederick Sound, Alaska.



'Thar she blows'. Whale spouts are everywhere. Each has a carbon component which would be taxable in NZ.
Chatham Strait, Alaska, June 2008

17.5 lb King Salmon; worth US \$100 in shops. Boats trolled but few caught anything. This fish caught itself and the rod was shoved into Robin's hands.



Few Flowered Shooting Star. Just one of the hundreds of colourful plants growing in wonderland. Pacific coast, Kruzof Island.



Wolf.
Logging road, False Island, Alaska.



Real fillets. Prepared by John. Baked over alder twigs. Salmon never tasted better to Kiwis.



Hiking trails are shared with bears. People talk loudly to warn bears. Lots of bear pooh on tracks. Kruzof Island.



Bald Eagles. Highly visible and numerous. Prime predators. Capable of killing other birds. Sitka, Alaska.



Modern sailors, e-mailing and reading in a snug, well heated cabin. Alaska.



Exercise. Four metre tides. Bear footprints on the tidal mud flats shortened the visit. Holkam Arm.



Ravens. Crafty. This clever bird dominates Indian mythology. Sitka.



Tranquil bay for night mooring. Canadian geese honked overhead. Icebergs drifted past. A typical bay of the inner passage.



Large female grizzly (brown) bear with her three cubs, grazing. Kruzof Island, Alaska.



Two nervous, large brown bear cubs. 50 metres away. Kalinin Bay, Kruzof Island, Alaska.
www.onestopramshop.co.nz



'Wolf' wearing a collar. Alsatian and Dalmatian. False Island, Alaska.

47°N CANADA JUNE

British Columbia (BC) is big and beautiful.

Every country is beautiful to its people, it's only the tourists who do not always see it the same way.

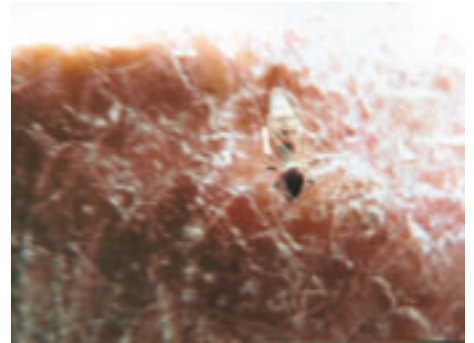
Canadians are open, proud people and 'not' Americans. Cities and rural towns are neat and colourful. Cereals and lucerne are the main crops grown. There are sheep and lots of horses.

The huge Canadian Forest industry is 'hurt' by twin disasters; US mortgage woes and the killing of pines by a bacterial infection. The pine beetle bores into pines, making an opening for a bacteria which kills the tree. Lodgepole pine has been wiped-out from the west coast and Rockies. Disease is spreading east 2-300 kms each year. Loggers have only 18 months to salvage diseased trees before they are useless. As the industry declines skilled labour has moved away.

This catastrophe is blamed on global warming. The longer breeding season of the insect is considered the reason so many new trees are attacked. Most of the affected areas visited have 20-40 feet of snow each winter; still cold enough to slow beetle reproduction rates. Many factors could be affecting beetle behaviour. It is possible that the bacteria is more virulent!



Blackfly. That hypeodermic syringe is huge.



Ouch! Blackfly gorging on Kiwi blood, Falkland, BC.



Porcupine quills scratch cars causing serious damage. Every car is protected. Kokanee Glacier Road, BC

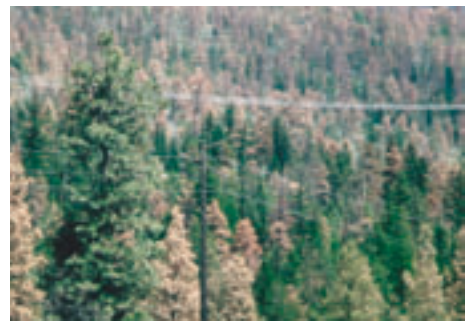


Sandstone buildings are large, grand and mostly unoccupied in rural towns. Rossland, BC.



Forest regenerates slowly after widespread clear felling.

Whistler, BC.



Green trees, OK. Brown pines, all dead or dying. Millions of hectares of pines are dead.

Vernon, BC.



Leg of lamb. \$38.47 per kg. Whistler, BC.



Kettle Creek. Plump Texel sheep.



Dorper ewe and lambs. Kettle Creek.



Many Canadians have long, drooping moustaches; This was the best seen. Nelson, BC, 2008.



Stickers: Bio-diesel, Peace, Got Love?, Neuropthic medicine, promising health naturally. Who's your farmer? Lots of alternative people live in the West Kootenay region.

Nelson, BC.



Busy, unpretentious and full of young people. Nelson is the cultural centre of West Kootenay region. BC, June 2008.

www.onestopramshop.co.nz

37°N LOS ANGELES, MAY & JULY

Food prices have risen but producers don't see much of the lift. Food quality has improved. Less people smoke.

California is embracing 'greenness' with Farmers Markets, healthy foods and environmental concern, whilst **driving** everywhere. Most Californian legs don't walk much.

Fuel prices are causing pain but the sub-prime mortgage fiasco is causing extreme pain with foreclosures widespread.

Where people do walk (shops, hotel foyers, airports) the dominant sound is the clipperty-clop of stiletto heels. Singlet clad guys and dolls wish to be admired as they troop to and fro from gyms.

How gorgeous they could still be by exercising in my vegetable garden with a spade or fork.

Most Californians have now perfected the ability to smile at nobody, to talk to an invisible person, to eat grossly while walking, driving, sitting down or talking to someone. All this, while listening to their i-pod too.

To succeed with these multiple skills, it is easiest to talk without listening to anybody but yourself. This is a skill perfected by many many people in USA. People practice these skills by just putting the mobile phone up to their ears and shouting happily into space.

SHEEPMEAT PRICES

Canada. British Columbia, June 2008.

Creekside Market,	Nakusp,
Tuna.	\$45.87/kg.
Sockeye.	\$24.62.
Top sirloin beef.	\$13.75.
Lamb leg.	\$20.00.

Supermarket, Ritchie's.	Whistler
Lamb leg.	\$38.42/kg.

Restaurant meal.	Nelson,
Shank.(Most expensive)	\$23.12.

USA, California. May 2008.

Ralphs,	Los Angeles.
Shanks.	\$9.24/kg.
Shoulder.	\$20.50.
Leg.	\$14.35.
Rib Chop.	\$52.74.

Breed	Tally	Av L Wt	C Wt	Yeild %	Carcase \$
Finn Texel	87	42.2	23.1	49.5	92.67
1/4 F 1/4 T 1/2 Rom	45	37.7	20.3	53.9	91.57
3/8F 3/8T 1/4 Rom	48	50.7	22.3	44.0	94.98
3/8F 3/8T 1/4 Per	21	49.4	21.1	42.7	93.78
Finn	38	46.5	19.7	42.4	87.65

SFF, Takapau, July 2008.

THE CARBON EQUATION.

Ruminant herbivores have been around for 40 million years, mostly in numbers similar to now.

Carbon found in their plant food is in the form of carbohydrate which has been removed from the atmosphere by photosynthesis.

Plants eaten by herbivores are converted into animal tissue or used as the fuel of metabolism. Spent fuel, combined with oxygen is expelled as carbon dioxide (CO₂) to the atmosphere.

The total amount of carbon respired equates to the amount of carbon in the eaten plant.

Stock also emit methane (CH₄) which also has a carbon component. Any carbon emitted as methane is less carbon respired as carbon dioxide. So the carbon volume returned to the atmosphere, as CO₂ or CH₄ can only be identical or less. Less because animals add organic material to topsoil which also has a large carbon component.

So the same volume of carbon is circulated between plants, animals and the atmosphere in a cycle that has been around for millions of years, without destroying planet earth.

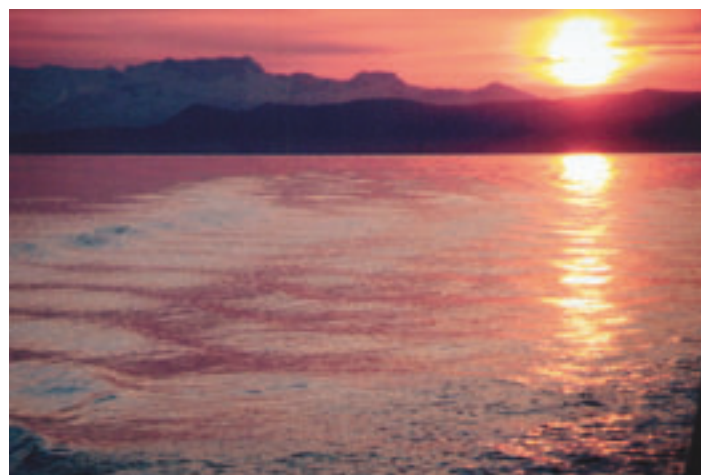
Without carbon dioxide plants would die. Without plants all animal life would die also.

It is the pollution caused by burning hydrocarbons and human activity which needs to be targeted for 'meaningful' penalties, not the naturally balanced neutral carbon exchange systems evolved by plants and animals.

*Scientists are developing ways to cut methane production by ruminates. **Helicobacter pyloric** bacteria causes ulcers and cancer. Thanks to antibiotics in the rich world, it's facing extinction. In its absence, children are prone to more asthma. Indications are that coevolution of the bacteria and humans is complex and not always harmful.*

Caution: Remove the methane producing bacteria from ruminates and other problems are likely to develop.

40 million years of co-evolution is a long time.



Sunsets frequently fill the whole sky with a red glow.
Halleck Harbour, Kuiu Island, Alaska.

NZ FARmiNG NeedS A LeADeR

Farmers are, politically insignificant; economically 'the' **heavyweight**.

In the US, the farming lobby scares congress with the possibility of food queues and the Farm Bill gets passed time and time again.

In the EU, farmers 'huff and puff' but they have to accept the rules which go with subsidies. The threat of food shortages is real. Only France values its rural communities. French farmers have muscle, often their own.

New Zealand's last effective rural leader was Peter Elworthy who had the respect of both the rural and the urban communities. He was competent, eloquent and persistent. No other leader has emerged who could galvanise people, into action and remain respected.

He became Chairman of Federated Farmers (FF) after orchestrating pioneer work in the deer industry. The Federation, until he took over, had little success on behalf of farmers. If in the hands of one person FF could be effective then another with equal mana obviously could do the same.

Where is that person?

FF languishes as a nonentity, sniped at by politicians regularly.

Leadership could emerge from Meat and Wool NZ. At present M&W NZ has no ability to galvanise farmers into action; no credibility.

Meanwhile, farmers stay producing and NZ stays afloat as all the bright money makers in finance fail daily.

NZ Farming is the economic heavyweight.

A 'Man' is required and required urgently. He must have personality, experience; confidence to unite farmers, shake political parties to act in the best interest of farmers and so ensuring NZ's economic wellbeing.

How about Richie McCaw? He has, mana, a farming background and can unite a nation.

"Sheepmeat: Key elements of success and failure in the NZ sheep industry from 1980 – 2007." Prof Saunders.

"The real long-term power lies with farmers, because they control the supply of livestock."

There is an urgent need for a new leader to drive the required industry change".

Co-operation is required ---- this involves linking farmers with customers. (FW. Sept)

Texel Marketing Group's links farmers with end-users.

Farmers have the power but not a leader.



Petsmart. Pets getting groomed and loving it. Adoring owners are already well groomed.
Langley, BC.



Baleage stack before being sold to dairy farmers in Waikato.
Block III, Tarata



'Tirau Ted'. Ted Ballantine manager from Bennydale, called in for thoughtful discussion.
Paratu, May 2008.



Huge rains, little flooding. 'Paratu' (farm name) means high ground.
Aug 2008.



Two cars and one truck wrecked fences in June.
Burnside, 2008.

Robin Hilson, Hawke's Bay	(06) 855-8335
Chris Southgate, Dannevirke	(06) 374-2740
Peter Kettle	027 483-9595
Dan Wheeler, Rangiora	027 436-3167
Blair Gallagher, Mt Somers	(03) 303-9819
Guy Bellerby, Te Anau	(03) 249-8220
Jeff Moss, Tokanui	(03) 246-8308

APN Print Central 81614