



One Stop Ram Shop



INTERNATIONAL
NEWSLETTER No. 75
FEBRUARY 2009



Dewy spider web above the Wanganui River.
King Country, Sept 2008.



Hello Robin. OSRS Texel Suffolk at Orari Gorge Station.

Northern North Island Meat and Wool NZ sheep, and beef farmers get a vote to replace an incumbent director, who dates back to the NZ Wool Board. The ward needs a new enthusiastic director on the Board of Meat and Wool NZ.

James Reeves, a lively, youthful personality is a candidate and just what is needed.

James worked as an area manager for M&W NZ so knows the good and bad points of the organisation. He resigned somewhat frustrated and is now back to promote change.

Reared on a farm, university qualified, experienced with the organisation, James is uniquely placed to make constructive change for farmer's benefit.

Vote for **James Reeves**, he will make things happen.

PREDICTIONS

FEB, 2009.

- John Key will lead.
- Sheepmeat prices will hold for 2009/10.
- Recognition of the 'Finn effect' to guarantee performance in ewes.
- M&W NZ will downsize.
- More deer farms converting to dairying. High fences stop cows jumping out.
- Soil salination on southern irrigated farms.
- Restrictive trade practices re-emerge.



Sunday at St Andrew's College. Competitive cricket for a crowd of 90. Canterbury teams have a history of winning; they have support. Christchurch, Oct 2008.

192 Kiwis received New Years Honours which recognised service to the crown and community.

Recognition is given people in paid jobs who are doing what they are paid to do. Scandalous.

23 professors, 10 academics, 4 MP's, 5 Church Ministers have been lauded. 28 are JP's and 11 already have awards. There is a route to 'higher' recognition.

A national scheme to acknowledge service is excellent, but the selection process is flawed. Rural people who beaver away in the community, keep NZ solvent, never receive recognition. Rural people don't get awards. Actors and Academics are always giving themselves prizes. Surely that's enough?

Farmers, nominate rural achievers and recognition will come.

FIVE LINERS

○ Kiwi's use 140 litres of water per day each. HB dairy cows average 146 litres each.

○ "NZ has more coal resource energy 'per capita' than Saudi Arabia has with oil --- NZ is the lucky country". Gas extraction from Waikato coal alone could supply 10% of NZ's gas needs. NZ has 2% of the world's coal.
Don Elder, Solid Energy.

○ Huge advertisements in the Farmers Weekly by Agriculture ITO listing masses of employers and people who completed their course does little to excite farmers whose levies support this organisation.

○ Gorse which covers 900,000 ha nation-wide, leaches 40-60 kg of nitrogen/ha annually. This is the same leaching level of nitrogen from dairy farms.

Naughty gorse.

○ Doug and Fraser Avery deserve the plaudits for their innovative efforts to deal with the dry Marlborough climate. Extensive lucerne pastures (300ha) and clever livestock management (using OSRS rams) allows them to cope. They use the best features of their environment to deal with the worst feature; aridity.

○ Each day NZ has 7900 people in jail, 33900 with community based sentences. Police receive 1931 emergency calls, 1169 crimes are recorded, 3900 road infringement notices are issued and 29000 justice sector staff are employed
Dom-Post

A booming industry whose every activity makes news.

○ Because older farmers respond to surveys about their age and younger ones do not bother, it is likely that the average age of farmers is not 58 years but 44.

○ Pity your poor accountant; it's hardly their fault all this doom and gloom. Give her a **hug**, it must be awful listening to tales of woe and seeking to help clients they enjoy when the situation is hopeless
FW, 22 Dec.

○ Animal Rights voices have long complained about things they can see but fail to complain about things they cannot see. If large nets were used to sweep over whole farms wrecking houses, buildings and fences to gather cattle and sheep for a meat processing industry they would howl. Trawling takes the whole fish populations, masses of by-species and shatters the environment. Few see the destruction.
Peter Kettle, OSRS

○ "Knowledge is the key to improving the farms bottom line, not a flood of information".
Prof Hugh Blair. RN, Dec 08.

○ There is a real shortage of truck/tanker drivers in Southland. Anyone is being used. Recently an 'experienced' driver reported that he had killed a farm dog. "That's OK, it should not have been loose mate".
"It wasn't, it was in its kennel".

○ In 1957, 200 wethers were sold for 5 guineas each and a MK I series Landrover was bought with the proceeds. The Landrover still goes.
Peter Mc Neil, HB

How many guineas would buy a modern Toyota?

○ OSRS Xmas 'do' was at Friar Tuck Restaurant, Takapau. Our most senior guest was reported weaving home toward Waipukurau in a suspicious manner. He was stopped and breath tested. He admitted to drinking but passed the test. He had drunk at least two bottles of beer, three gins and three glasses of wine, but also had eaten well.

○ Selling 'Tarata' attracted plenty of interest nationwide. World financial strife stopped dairy farm interest. We continue to farm this beautiful, green belt property with its young brown soils and ideal facilities.

○ Farmers rightly feel pressured into a costly, time consuming traceability scheme which will not increase farmer returns.

Another industry is developing.

○ 2065 native plants are found in NZ. But 22000 non-native plants grow here. Of these, 2069 are naturalised and spread themselves. Documented NZ plant species extinctions are only three. Invasions did **not** set off extinctions and may have spurred diversity.
Dom-Post, NZPA, 13-9-08.

○ As governments come and go a series of 'lame duck' Agricultural Ministers also moves on; each to the praise of the agricultural press. It is decades since agriculture has had a committed minister and the press should acknowledge this.

Carter has the chance to change this bleak record but the signs are not good.

○ What overseas producers receive for lamb. China, \$120. Scotland, \$140. RSA, \$120-150. Canada, \$150-180. T\$150 has to be possible
Ken Elliot, Middlemarch.

○ SeaFood. 2.8 billion people rely on their seas for food. In 2006, 93 million tonnes of fish were caught, value \$90 billion. Unsustainable. Joint fishing ventures have led to the collapse of local industries, eg. Sudan. Sudanese are excellent fishermen with centuries of experience. JV's with European partners decimated their fish stocks. Fishermen turned to bigger species; cargo carriers.

Piracy is rewarding, easier and probably no less dangerous than fishing. 42 ships were captured in 2008; good fishing.

○ Fleeing Aussies. 60,000 live in NZ, 14,000 arrived in 07-08. (31,900 Kiwis left NZ for Aussie),
Dom Post, Oct 2008.

○ Over half of Britain's old forests, over 400 years old have been felled in the past 80 years. 600 are threatened by new roads, pylons, housing etc.
Dom Post.

A faster rate of chop than with the Amazon rain forests.

○ Japanese whaling has revenue of \$142 million, and provides several thousand people a living. \$14 million subsidy is given by the Japanese government, to the fleet
Japanese Foreign Affairs Spokesperson.

○ Washington hosted a large gathering of presidents and prime ministers (G20) to discuss the global financial crisis. White House chefs provided a sumptuous feast to the group representing about 90% of the world's gross domestic product.

Thyme-roasted rack of lamb was the main.



Southland has plenty of sheep (and snow) Spring.
Dave Riddell, Hokonui, Oct 2008



Keith Milne's (MIAG) hoggets mated with dorper rams.
Otautau, Oct 2008



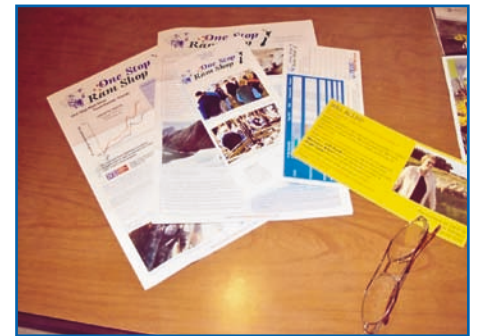
Hydrogen-sulphide bubbles from a tranquil pond. Taxable?
Burnside, Dec 2008.



A 'normal' season for slinkies, i.e. 30000 lambs, 2500 calves, 500kms daily collection from Garston to Mossburn.
Mr Soper, Oct 2008.



Bold, well woolled 1/4 Finn 1/4 Texel 1/2 Perendale ewe hoggets at Waipara, Canterbury.
James Forbes



Newsletters are often the first read. Hundreds of proxies were given the farmers standing for the WEL Board. An effective campaign.
Albury, South Canterbury



RAM4U reflection. 'The Green House' shop.
Ohura, Sept 2008.



Two winter storms caused massive damage in the SI. Slips at Omihi.
North Canterbury Oct 2008



Huge poplars beheaded after slipping down a hillside in a 'platoon'. Big trees and 'slippery backs' don't mix.
Jim Rainey, Kawhatau, Taihape.



Clinton Waghorn dosing Finn-Texel lambs at shearing time.
Kawhia, Nov 2008.



Mud flats and tracks. Raglan and Kawhia are spectacular and unique. Worth a visit.
Kinohaku, Nov 2008.



Something for everyone. Spray has killed light scrub and left podocarps along the river. Grass now grows well.
Simon Loft, Kakahi Valley Rd. King Country, 21 Nov 2008.



John Gregan (MIAG) and Robin Waimate, Oct 2008.



Spring, OSRS mail ready for posting, 28 boxes.



Dan Wheeler, scanner, sheep enthusiast. Leithfield, Oct 2008.



Hershall Ullrich (SFF director) and Robin. Cave, Oct, 2008.



Surprise. A large snail perched on the ledge of vertical papa. Potiki Rd, Taumarunui. Nov 2008.



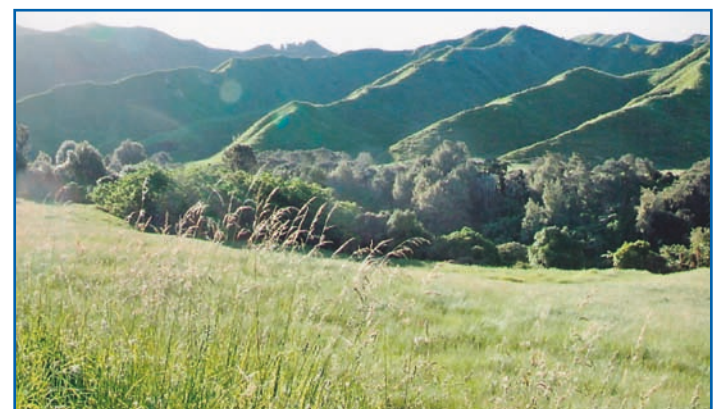
Robert Carter with 'acceptable' graffiti. His own. Kirikau, Taumarunui, Sept 2008.

Recent comments by Tony Leggett (Country Wide) are correct.

"Attitude will determine how well NZ's agribusiness sector responds to the challenges ahead this year".

He is referring to the world economic crisis. His team "will be optimistic, but realistic". This is just what farmers expect from the driving editorial force behind the best rural newspapers. Tony is committed to accurate, realistic and superior journalism.

. OSRS, in a tiny way, is likewise committed to accurate reporting and the producing of genetically superior sheep.

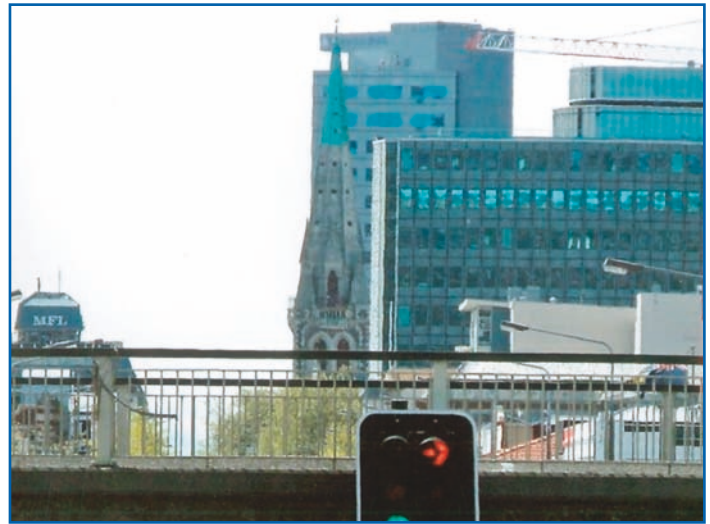


Last light plays on green ridges above the Wanganui River. Taumarunui, 3 Nov 2008.



Seagull roost.

Abel Tasman, Tahunanui, Nelson.
Nov 2008.



Cantabrians love their cathedral but do their best to hide it.
Canterbury Oct 2008.



Once a sheep farm; now grapes, onions and canola. Changing times.
Keith Berry, Waipara



Ewes and lambs, ¼ Finn, ¼ Texel, ½ Perendale. Eighteen tough months in a row.
Tarata, Jan 2009.

It is unfortunate that the deceit and dishonesty of Wall Street has come to affect us all. Financial 'cyber'shuffling is nothing but gambling, no small party owning shares can influence a company. Crashes will always come and Governments (i.e. taxpayers) will again have to bail out capitalism's greed.

NZ, Denmark and Sweden are recognised as the world's least corrupt countries by experts.
Transparency International, 2008.

Nice to know, lets stay this way.

DNA parentage recording was used by OSRS with Finnsheep. But no more. It is only 80% accurate at current prices (per comm. Prof. H Blair)

Practical attributes of OSRS sheep i.e. survivability, lack of dags, longevity, ease of handling, toughness, and pleasant temperament is part of recording with SIL.

OSRS genetic gains are significant, the practical achievements with stabilised crossbreds: momentous.

OSRS never stops learning from these super sheep.

Survivability and growth rates are the major traits now sought (and have been for 10 years) as fertility has reached an acceptable, repeatable level.

Bailouts (subsidies) are not new, they protect farmers from cheap food competition, they prop up inefficient airlines. "They are a constant feature of advanced capitalism". The US Foreign Military Financing programme gives to countries to buy weapons from US corporations. Professional fees of hedge fund managers are called capital gains which attract less tax than if called correctly, personal income; a **US\$20 billion subsidy** of executive pay. Congressmen depend on funds from these companies for their re-election so no financial regulation is introduced to stop the obscene greed which created the present Wall Street disaster.

"Campaign finance is the best investment a corporation can make. Give a million to the right man and reap a billion dollars of State protection, tax breaks and subsidies".
Corruption? Guardian.

Last newsletter called for leadership in our sector.

Federated Farmers (FF) is quietly providing some. New personnel, lively bright communications; the enthusiasm shows. A drive to become more representative of rural communities has worked.

FF is setting targets (eg. T \$150.), pushing issues, explaining their stance on important topics like the RMA. FF has direction. FF is not popular with politicians who know they cannot ignore it. By spending their money and time wisely FF have earned support.

M&W NZ is rolling in money as it gathers in \$40 million annually. It is full of spin and wastes money everywhere. It is too big, cumbersome and inept.

M&W NZ is popular with politicians, because it is a quasi-bureaucracy which doesn't 'push' farmers interests.

M&W NZ provides no leadership.



Texel Suffolk.



Dorper.



Stabilised: Finn Texel.



Stabilised: 1/4 Finn 1/4 Texel 1/2 Perendale.



Stabilised: 1/4 Finn 1/4 Texel 1/2 Romney.



Stabilised: 3/4 Texel 1/4 Finn.



Stabilised: 3/8Finn 3/8 Texel 1/4 Romney.



Lake Pukaki and Mt Cook. Lakes full and overflowing.



High performance ewe hoggets with lambs at Slope Point. Carol and Bevan Haslett's Finn-Textel flock is now available for purchase. Please contact Robin. Southland, 31-1-09



Sale OSRS Dorper and Texel Suffolk rams at Blair Gallagher's farm. Mt Somers



Richard Simpson's quality, stabilised Finn Texel ewes. Dipton 30-1-09



OSRS Rams at OSRS South, Jeff Moss' farm. Otara-Haldane, 31-1-09



Kairakau Beach beckoned after arriving 5277 kms around the South Island. February 9, 2009.



Charlotte Tucker is welcome to write on Grandad's car, just like anyone else. February, Nelson.



OSRS has culled sheep with dags for three decades. Use OSRS rams and you'll have no sheep like this. Southland, 5-2-09.



These cherries were better than the spelling. Frankton, Queenstown, 26-1-09

DORPERS ARE WORTH THINKING ABOUT.

Every 73 days rams are mated with dorper ewes. Ewes do conceive for 365 days but have more multiples with the autumn tup. Ewes conceive while lactating.

OSRS can produce prime lambs all year. If processors wish to market chilled fresh meat all year all they need to do is pay an 'out of season' premium, contractually. A 365 day kill is now practical and possible.

Dorpers (& dorper cross)ewes show annual losses from scanning to tailing of about 10% only; this is significantly better than with NZ sheep. Lambs have extremely thick skins and are born with insulating guard hair.

Dorpers seem unaffected by arid spells.

Recent HB droughts caused body weight to fall markedly on traditional sheep but not so with dorpers.

Dries Wiese (SA Dorper breeder) alerted OSRS to this trait, OSRS confirmed it.

OSRS witnessed similar results at Rutherglen Research Station (Victoria). In an extensive crossbred trial only dorper X merinos thrived in the last Australian drought.

Dorpers shed their wool slowly, not in chunks. Sometimes small pieces may be seen in sheepyards.

OSRS now has some lambs shedding at one month of age. Upgraded flocks have less wool.

Dorpers have high yielding carcasses, 8% more red meat yield. (John Atkins - Lean Meats).

Dorpers are non seasonal breeders, produce multiples, survive well, need not grow wool, run on minimal 'fuel' are medium sized sheep, produce high yielding carcasses which are ideal for processing.

Dorper feet are still an 'issue' but of declining significance at OSRS. Ruthless culling for poor feet has largely eliminated the faults which were no bigger than that experienced with Texels and Finns initially



Dries Wiese (Sth African farmer) and Peter Kettle OSRS. Two dorper enthusiasts with hoggets and their lambs. Wiese has the largest dorper stud. OSRS, Nov 8, 2008



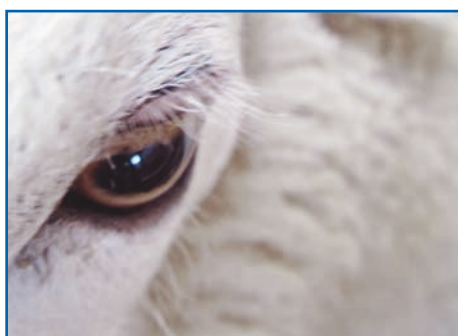
Dorper Lambs, August born. Sept 2008



"Go away, be terrified, leave my nest alone". Angry Mrs Pukeko. Aug 2008



Jeff Moss's new toy makes a storm. OSRS, Southland



I'm watching you!

Paratu 2008



Taratahi Agricultural training students visit. Nov 6, 2008.